




ALBAY ELECTRIC COOPERATIVE, INC.

W. Vinzon Street, Albay District, Legazpi City

 aleco_ogm@yahoo.com
aleco_ops@yahoo.com



Power Supply Procurement Plan 2024-2033

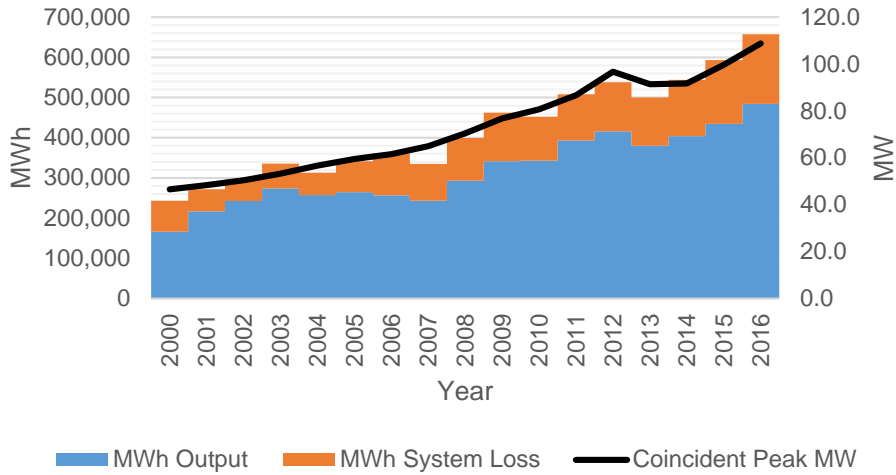
(On-Grid)

Historical Consumption Data

	Coincident Peak MW	MWh Offtake	WESM	MWh Input	MWh Output	MWh System Loss	Load Factor	Discrepancy	Transm'n Loss	System Loss
2007	46.53	244,140	19,060	243,357	166,367	76,989	60%	0.00%	0.32%	31.64%
2008	48.43	274,559	11,954	272,137	217,190	54,947	64%	0.00%	0.88%	20.19%
2009	50.43	299,116	186,288	295,938	242,659	53,279	67%	0.00%	1.06%	18.00%
2010	53.30	339,552	256,395	335,522	274,316	61,206	72%	0.00%	1.19%	18.24%
2011	56.75	316,944	164,558	313,141	257,525	55,616	63%	0.00%	1.20%	17.76%
2012	59.55	345,667	136,215	341,369	264,711	76,658	65%	0.00%	1.24%	22.46%
2013	61.55	364,635	128,001	360,972	256,746	104,226	67%	0.00%	1.00%	28.87%
2014	65.00	338,708	99,426	337,680	243,617	91,306	59%	-0.82%	0.30%	27.04%
2015	70.50	404,294	98,117	399,589	293,216	106,373	65%	0.00%	1.16%	26.62%
2016	76.82	464,478	132,254	458,228	341,743	120,844	68%	0.95%	1.35%	26.37%
2017	80.72	458,300	140,199	452,001	342,928	109,826	64%	0.17%	1.37%	24.30%
2018	86.70	514,987	222,216	508,010	393,437	115,129	67%	0.11%	1.35%	22.66%
2019	96.71	543,883	199,150	536,910	416,330	122,018	63%	0.27%	1.28%	22.73%
2020	91.44	505,543	52,936	500,122	380,334	119,788	62%	0.00%	1.07%	23.95%
2021	91.71	557,317	114,186	543,898	403,973	139,925	68%	0.00%	2.41%	25.73%
2022	99.65	610,233	293,909	593,408	434,685	158,723	68%	0.00%	2.76%	26.75%
2023	108.84	671,234	642,339	657,728	484,680	173,047	69%	0.00%	2.01%	26.31%

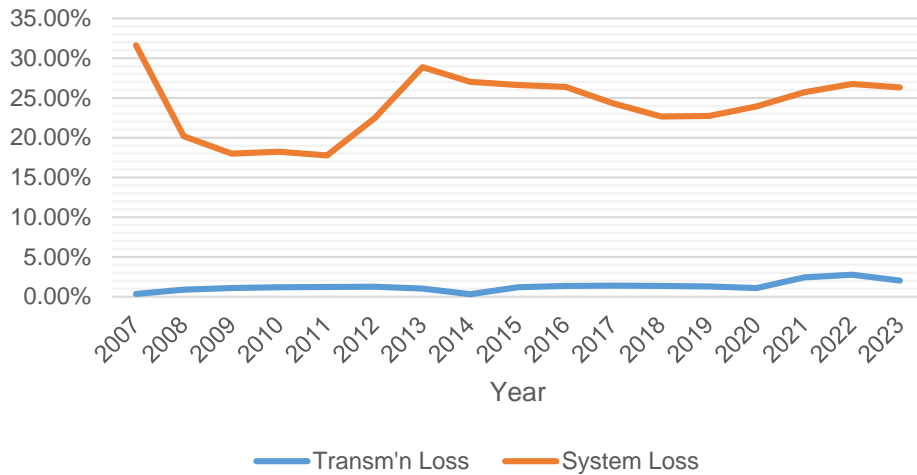
Peak Demand increased from 99.65 MW in 2022 to 108.84 MW in 2023 at a rate of 8.44% due to increasing number of establishments and businesses that have been energized. MWh Offtake increased from 610,233 MWh in 2022 to 671,537 MWh in 2023 at a rate of 9.13% due to latter reason. Within the same period, Load Factor ranged from 68% to 69%. Along with the increase in the offtake, consumption as well significantly increases by 9.13% from 610 GWh to 671 GWh.

Historical Consumption



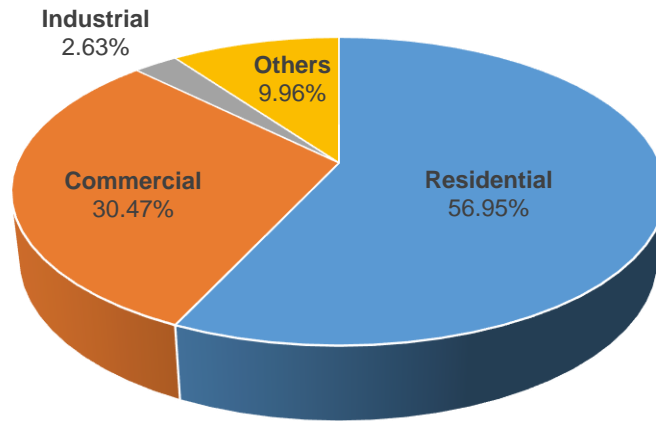
MWh Output increased from year 2022 to year 2023 at a rate of 10.32%, while MWh System Loss decreased at a rate of 2.19% within the same period.

Historical Losses



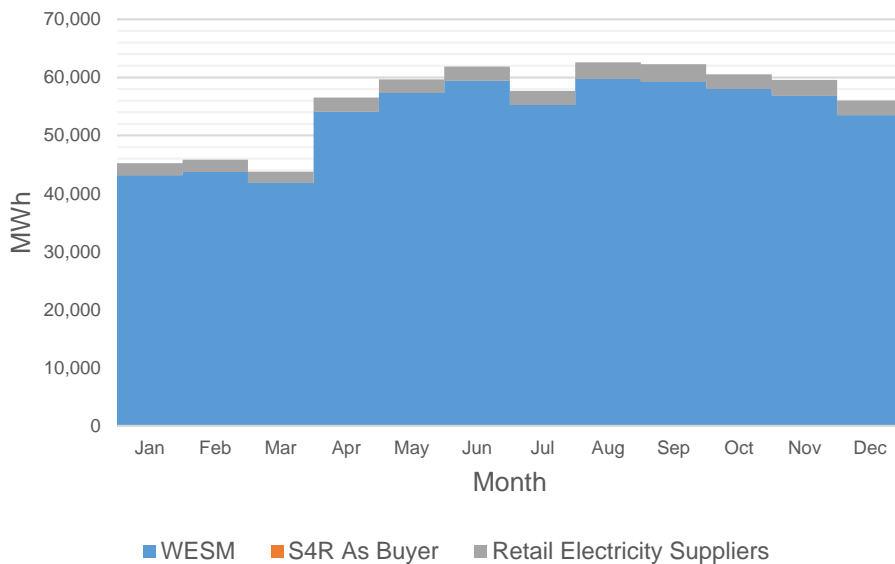
Historically, Transmission Loss ranged from 0.30% to 2.76% while System Loss ranged from 17.76% to 31.64%. Transmission Loss peaked at 2.76% on year 2022 while System Loss peaked at 31.64% on year 2007.

Previous Year's Shares of Energy Sales

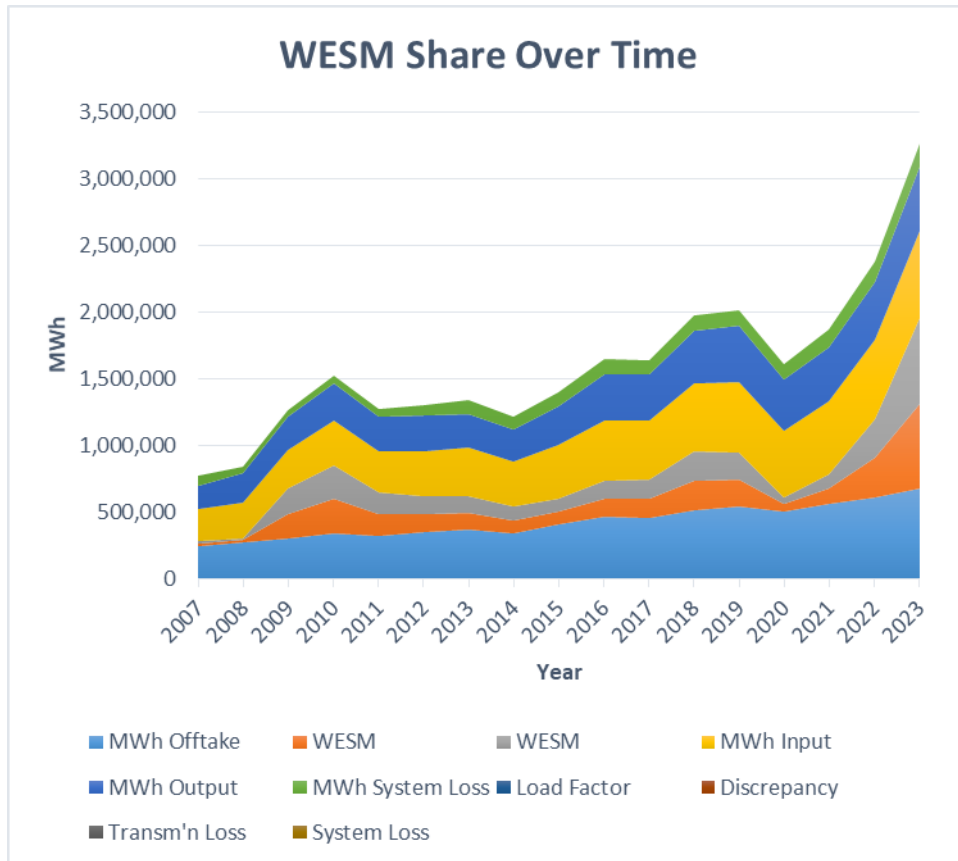


Residential customers account for the bulk of energy sales at 56.95%. In contrast, Industrial customers accounted for only 2.63% of energy sales due to the low number of connections.

MWh Offtake for Last Historical Year



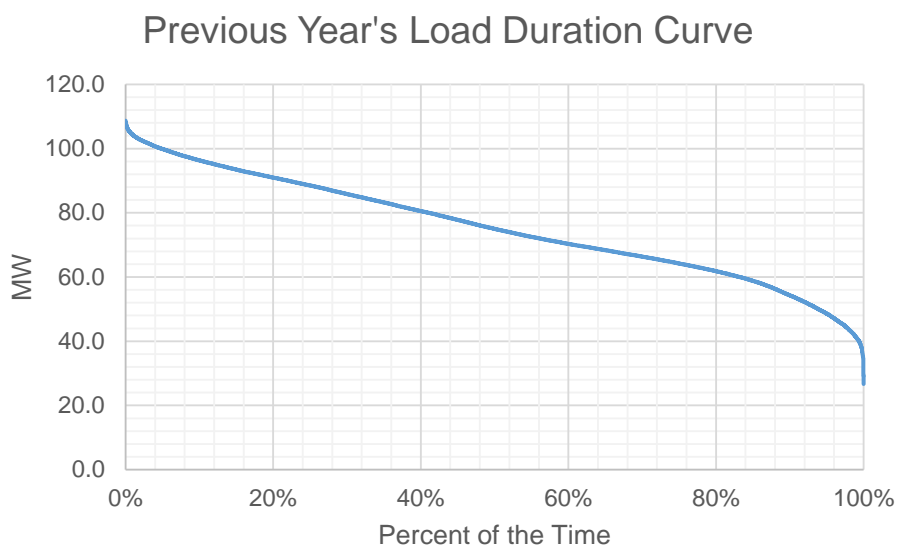
For 2023, the total Offtake for the last historical year is higher since ALECO is sourcing its 100% electricity from Wholesale Electricity Spot Market (WESM).



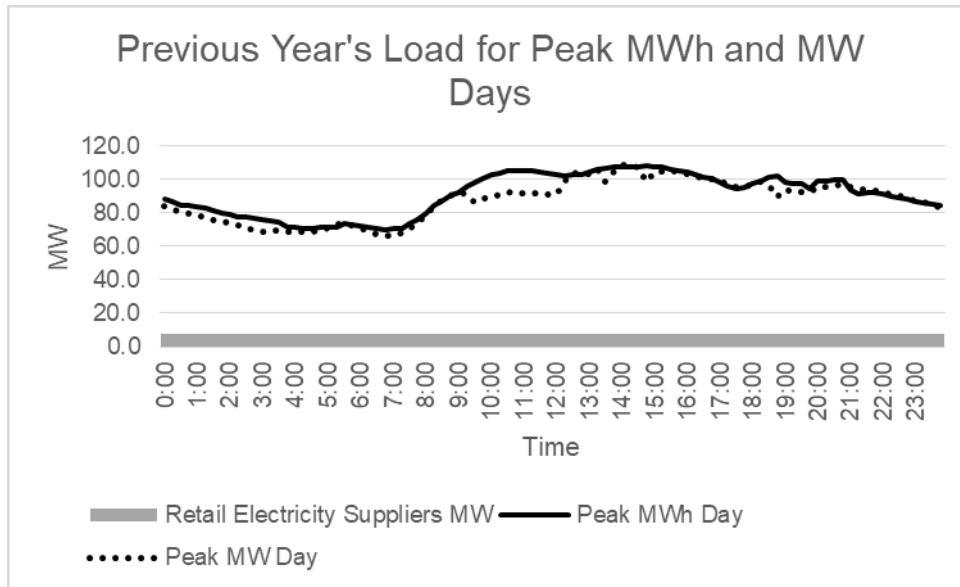
MWh Offtake increased from 610,233 MWh in 2022 to 671,537 MWh in 2023 at a rate of 9.13% due to increasing number of establishments and businesses that have been energized.

The share of WESM in the total Offtake ranged from 48.16% to 95.70% since ALECO's power is 100% sourced from the Wholesale Electricity Spot Market (WESM).

Previous Year's Load Profile

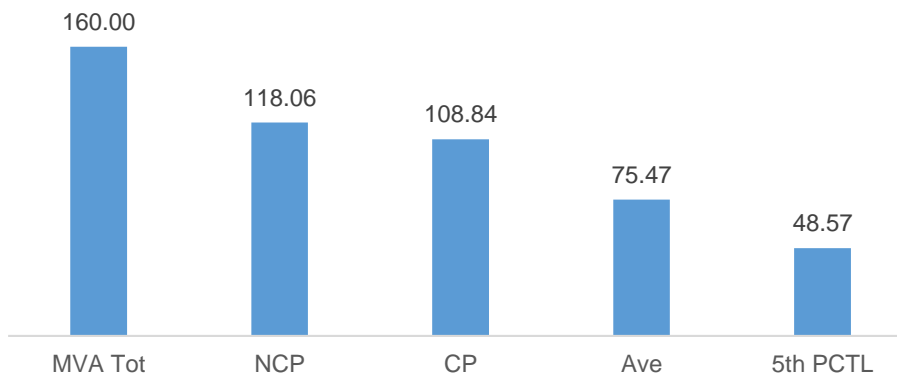


Based on the Load Duration Curve, the minimum load is 26.65 MW and the maximum load is 108.84 MW for the last historical year.



Peak MW occurred on 1415H last May 23, 2023. Peak daily MWh occurred on 1350H due to consumption and large number of Residential consumers.

Previous Year's Loading Summary



The Non-coincident Peak Demand is 118.06 MW, which is around 73.79% of the total substation capacity of 160 MVA at a power factor of 0.97. The load factor or the ratio between the Average Load of 75.47 MW and the Non-coincident Peak Demand is 63.92%. A safe estimate of the true minimum load is the fifth percentile load of 48.57 MW which is 41.14% of the Non-coincident Peak Demand.

Metering Point	Substation MVA	Substation Peak MW
LEGAZPI	40	30.022
LIGAO 1	10	8.451
LIGAO 2	10	9.772
MALINAO	10	6.008
BITANO	40	28.587
POLANGUI	20	12.948
TABACO	20	16.556
STO. DOMINGO	10	5.716

The substations loaded at above 70% are Legazpi, Ligao, Sto. Domingo and Tabaco Substations. This loading problem will be solved by the uprating of the substation itself that is being considered to include in the plans for the next succeeding years.

Forecasted Consumption Data

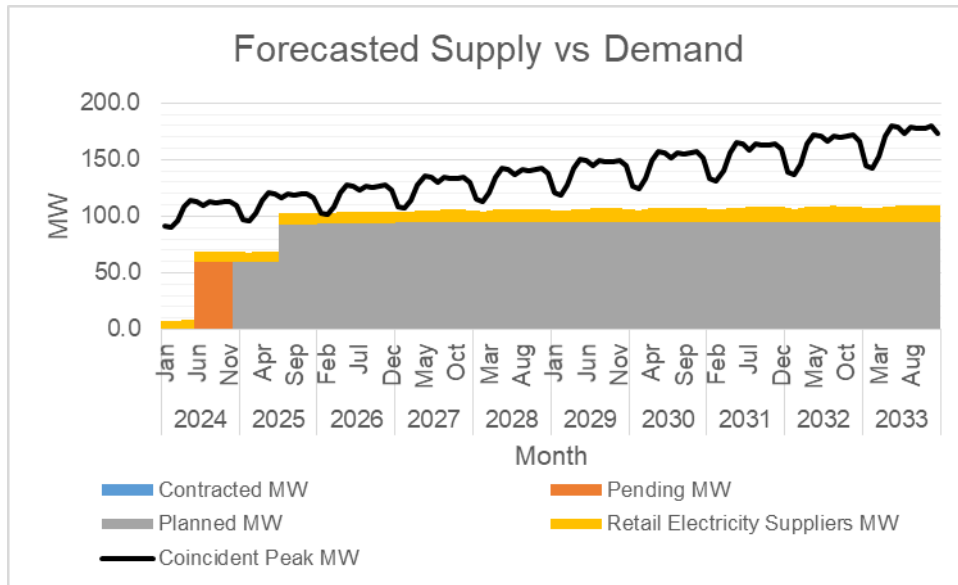
		Coincident Peak MW	Contracted MW	Pending MW	Planned MW	Retail Electricity Suppliers MW	Existing Contracting Level	Target Contracting Level	MW Surplus / Deficit
2024	Jan	91.59	0.00	0.00	0.000	7.75	0%	0%	-83.84
	Feb	90.04	0.00	0.00	0.000	7.44	0%	0%	-82.61
	Mar	96.46	0.00	0.00	0.000	7.67	0%	0%	-88.79
	Apr	107.84	0.00	0.00	0.000	8.55	0%	0%	-99.29
	May	113.77	0.00	0.00	0.000	8.53	0%	0%	-105.24
	Jun	112.82	0.00	60.00	0.000	8.66	0%	58%	-44.15
	Jul	109.56	0.00	60.00	0.000	8.87	0%	60%	-40.68
	Aug	112.94	0.00	60.00	0.000	9.05	0%	58%	-43.90
	Sep	111.96	0.00	60.00	0.000	8.94	0%	58%	-43.02
	Oct	112.64	0.00	60.00	0.000	9.00	0%	58%	-43.64
	Nov	113.41	0.00	60.00	0.000	8.98	0%	57%	-44.42
	Dec	109.70	0.00	0.00	60.000	8.79	0%	59%	-40.91
2025	Jan	97.14	0.00	0.00	60.000	8.21	0%	67%	-28.93
	Feb	95.50	0.00	0.00	60.000	7.87	0%	68%	-27.63
	Mar	102.30	0.00	0.00	60.000	8.12	0%	64%	-34.18
	Apr	114.38	0.00	0.00	60.000	9.05	0%	57%	-45.33
	May	120.66	0.00	0.00	60.000	9.03	0%	54%	-51.63
	Jun	119.65	0.00	0.00	60.000	9.17	0%	54%	-50.48
	Jul	116.19	0.00	0.00	93.000	9.39	0%	87%	-13.80
	Aug	119.79	0.00	0.00	93.000	9.58	0%	84%	-17.21
	Sep	118.74	0.00	0.00	93.000	9.46	0%	85%	-16.28
	Oct	119.46	0.00	0.00	93.000	9.52	0%	85%	-16.94
	Nov	120.28	0.00	0.00	93.000	9.51	0%	84%	-17.77
	Dec	116.34	0.00	0.00	93.000	9.30	0%	87%	-14.04
2026	Jan	102.89	0.00	0.00	94.000	8.70	0%	100%	-0.19
	Feb	101.15	0.00	0.00	94.000	8.34	0%	101%	1.20
	Mar	108.35	0.00	0.00	94.000	8.60	0%	94%	-5.75
	Apr	121.15	0.00	0.00	94.000	9.59	0%	84%	-17.55
	May	127.80	0.00	0.00	94.000	9.57	0%	80%	-24.23
	Jun	126.73	0.00	0.00	94.000	9.72	0%	80%	-23.01

		Coincident Peak MW	Contracted MW	Pending MW	Planned MW	Retail Electricity Suppliers MW	Existing Contracting Level	Target Contracting Level	MW Surplus / Deficit
	Jul	123.07	0.00	0.00	94.000	9.96	0%	83%	-19.11
	Aug	126.87	0.00	0.00	94.000	10.15	0%	81%	-22.73
	Sep	125.77	0.00	0.00	94.000	10.03	0%	81%	-21.74
	Oct	126.53	0.00	0.00	94.000	10.09	0%	81%	-22.44
	Nov	127.39	0.00	0.00	94.000	10.08	0%	80%	-23.32
	Dec	123.23	0.00	0.00	94.000	9.86	0%	83%	-19.37
2027	Jan	108.76	0.00	0.00	95.000	9.21	0%	95%	-4.55
	Feb	106.93	0.00	0.00	95.000	8.84	0%	97%	-3.09
	Mar	114.54	0.00	0.00	95.000	9.11	0%	90%	-10.43
	Apr	128.07	0.00	0.00	95.000	10.16	0%	81%	-22.90
	May	135.10	0.00	0.00	95.000	10.14	0%	76%	-29.96
	Jun	133.97	0.00	0.00	95.000	10.30	0%	77%	-28.67
	Jul	130.10	0.00	0.00	95.000	10.55	0%	79%	-24.55
	Aug	134.12	0.00	0.00	95.000	10.75	0%	77%	-28.37
	Sep	132.95	0.00	0.00	95.000	10.62	0%	78%	-27.33
	Oct	133.76	0.00	0.00	95.000	10.69	0%	77%	-28.07
	Nov	134.67	0.00	0.00	95.000	10.68	0%	77%	-29.00
	Dec	130.27	0.00	0.00	95.000	10.44	0%	79%	-24.82
2028	Jan	114.73	0.00	0.00	95.000	9.75	0%	90%	-9.98
	Feb	112.79	0.00	0.00	95.000	9.35	0%	92%	-8.44
	Mar	120.82	0.00	0.00	95.000	9.64	0%	85%	-16.18
	Apr	135.09	0.00	0.00	95.000	10.75	0%	76%	-29.34
	May	142.51	0.00	0.00	95.000	10.73	0%	72%	-36.78
	Jun	141.32	0.00	0.00	95.000	10.90	0%	73%	-35.42
	Jul	137.23	0.00	0.00	95.000	11.16	0%	75%	-31.07
	Aug	141.48	0.00	0.00	95.000	11.38	0%	73%	-35.10
	Sep	140.25	0.00	0.00	95.000	11.24	0%	74%	-34.01
	Oct	141.09	0.00	0.00	95.000	11.31	0%	73%	-34.78
	Nov	142.06	0.00	0.00	95.000	11.30	0%	73%	-35.76
	Dec	137.41	0.00	0.00	95.000	11.05	0%	75%	-31.36
2029	Jan	120.75	0.00	0.00	95.000	10.30	0%	86%	-15.45
	Feb	118.71	0.00	0.00	95.000	9.88	0%	87%	-13.83

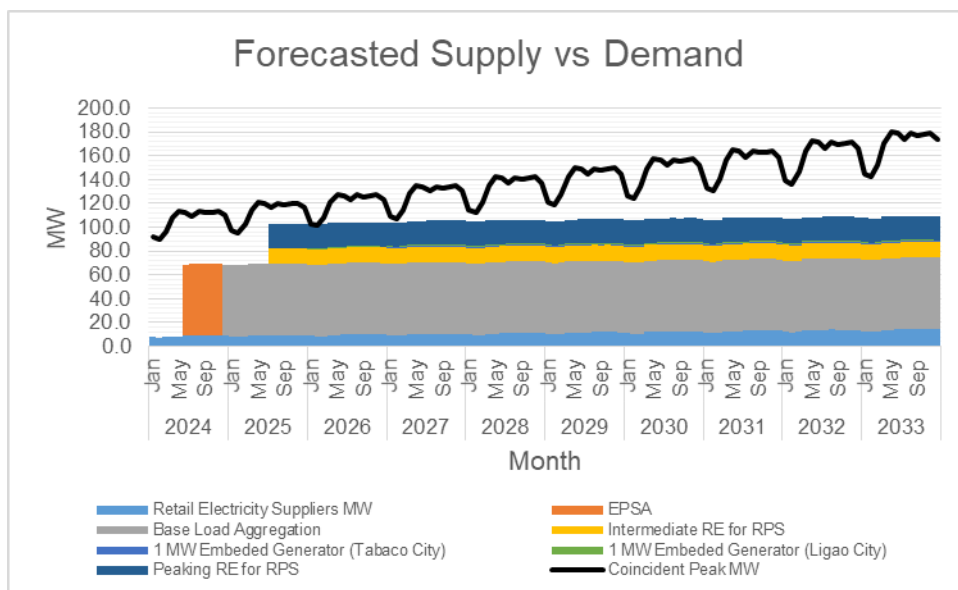
		Coincident Peak MW	Contracted MW	Pending MW	Planned MW	Retail Electricity Suppliers MW	Existing Contracting Level	Target Contracting Level	MW Surplus / Deficit
	Mar	127.16	0.00	0.00	95.000	10.19	0%	81%	-21.97
	Apr	142.17	0.00	0.00	95.000	11.36	0%	73%	-35.81
	May	149.98	0.00	0.00	95.000	11.33	0%	69%	-43.65
	Jun	148.73	0.00	0.00	95.000	11.51	0%	69%	-42.22
	Jul	144.43	0.00	0.00	95.000	11.79	0%	72%	-37.64
	Aug	148.90	0.00	0.00	95.000	12.02	0%	69%	-41.88
	Sep	147.60	0.00	0.00	95.000	11.87	0%	70%	-40.73
	Oct	148.49	0.00	0.00	95.000	11.95	0%	70%	-41.54
	Nov	149.51	0.00	0.00	95.000	11.93	0%	69%	-42.57
	Dec	144.62	0.00	0.00	95.000	11.67	0%	71%	-37.94
2030	Jan	126.79	0.00	0.00	95.000	10.86	0%	82%	-20.93
	Feb	124.65	0.00	0.00	95.000	10.42	0%	83%	-19.23
	Mar	133.52	0.00	0.00	95.000	10.74	0%	77%	-27.78
	Apr	149.29	0.00	0.00	95.000	11.98	0%	69%	-42.31
	May	157.49	0.00	0.00	95.000	11.95	0%	65%	-50.54
	Jun	156.17	0.00	0.00	95.000	12.13	0%	66%	-49.04
	Jul	151.66	0.00	0.00	95.000	12.43	0%	68%	-44.23
	Aug	156.35	0.00	0.00	95.000	12.67	0%	66%	-48.68
	Sep	154.99	0.00	0.00	95.000	12.52	0%	67%	-47.47
	Oct	155.93	0.00	0.00	95.000	12.60	0%	66%	-48.33
	Nov	156.99	0.00	0.00	95.000	12.58	0%	66%	-49.41
	Dec	151.85	0.00	0.00	95.000	12.31	0%	68%	-44.55
2031	Jan	132.84	0.00	0.00	95.000	11.42	0%	78%	-26.42
	Feb	130.59	0.00	0.00	95.000	10.96	0%	79%	-24.64
	Mar	139.89	0.00	0.00	95.000	11.30	0%	74%	-33.60
	Apr	156.41	0.00	0.00	95.000	12.60	0%	66%	-48.81
	May	165.01	0.00	0.00	95.000	12.57	0%	62%	-57.43
	Jun	163.62	0.00	0.00	95.000	12.77	0%	63%	-55.86
	Jul	158.89	0.00	0.00	95.000	13.08	0%	65%	-50.82
	Aug	163.81	0.00	0.00	95.000	13.33	0%	63%	-55.48
	Sep	162.38	0.00	0.00	95.000	13.17	0%	64%	-54.21
	Oct	163.37	0.00	0.00	95.000	13.25	0%	63%	-55.11

		Coincident Peak MW	Contracted MW	Pending MW	Planned MW	Retail Electricity Suppliers MW	Existing Contracting Level	Target Contracting Level	MW Surplus / Deficit
	Nov	164.48	0.00	0.00	95.000	13.24	0%	63%	-56.24
	Dec	159.10	0.00	0.00	95.000	12.95	0%	65%	-51.15
2032	Jan	138.88	0.00	0.00	95.000	11.99	0%	75%	-31.89
	Feb	136.54	0.00	0.00	95.000	11.51	0%	76%	-30.03
	Mar	146.26	0.00	0.00	95.000	11.86	0%	71%	-39.40
	Apr	163.53	0.00	0.00	95.000	13.23	0%	63%	-55.30
	May	172.51	0.00	0.00	95.000	13.20	0%	60%	-64.31
	Jun	171.07	0.00	0.00	95.000	13.40	0%	60%	-62.66
	Jul	166.12	0.00	0.00	95.000	13.73	0%	62%	-57.39
	Aug	171.26	0.00	0.00	95.000	13.99	0%	60%	-62.27
	Sep	169.77	0.00	0.00	95.000	13.83	0%	61%	-60.94
	Oct	170.80	0.00	0.00	95.000	13.92	0%	61%	-61.88
	Nov	171.96	0.00	0.00	95.000	13.90	0%	60%	-63.07
	Dec	166.34	0.00	0.00	95.000	13.59	0%	62%	-57.74
2033	Jan	144.90	0.00	0.00	95.000	12.56	0%	72%	-37.34
	Feb	142.46	0.00	0.00	95.000	12.05	0%	73%	-35.40
	Mar	152.60	0.00	0.00	95.000	12.43	0%	68%	-45.17
	Apr	170.62	0.00	0.00	95.000	13.86	0%	61%	-61.76
	May	179.99	0.00	0.00	95.000	13.83	0%	57%	-71.17
	Jun	178.49	0.00	0.00	95.000	14.04	0%	58%	-69.44
	Jul	173.33	0.00	0.00	95.000	14.38	0%	60%	-63.95
	Aug	178.69	0.00	0.00	95.000	14.66	0%	58%	-69.03
	Sep	177.13	0.00	0.00	95.000	14.49	0%	58%	-67.65
	Oct	178.21	0.00	0.00	95.000	14.58	0%	58%	-68.63
	Nov	179.42	0.00	0.00	95.000	14.56	0%	58%	-69.86
	Dec	173.55	0.00	0.00	95.000	14.24	0%	60%	-64.31

The Demand was forecasted with the use of a tool processing a Regression method provided by NEA. Peak demand and was assumed to occur on the month of May due to effect of weather that sometimes extended summer season. Monthly Peak Demand is at its lowest on the month of February due to cold weather. In general, Peak Demand is expected to grow at 5.85% annually for five (5) years and 4.29% for the succeeding ten (10) years.



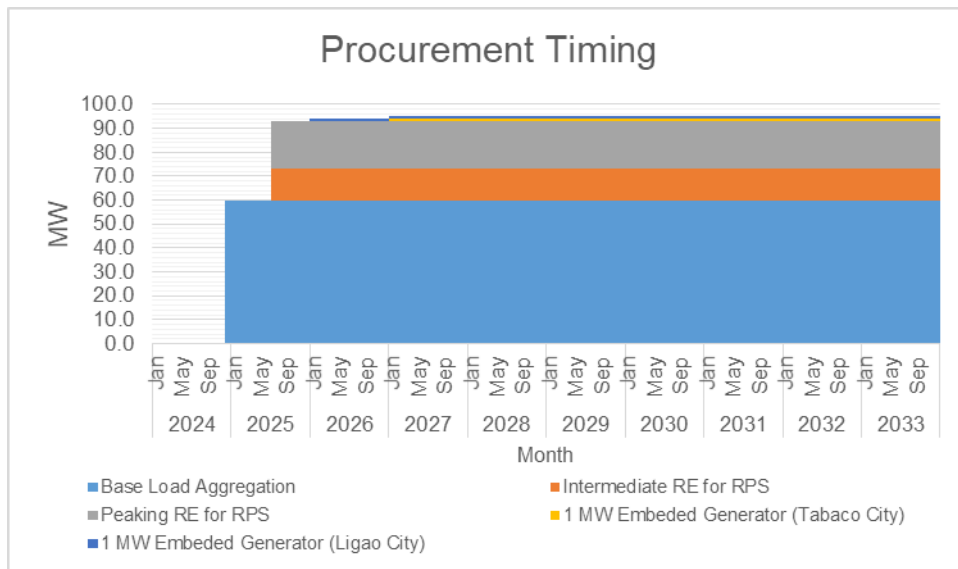
The available supply is generally below the Peak Demand that will be sufficient once the planned contract level for CSP shall be materialized.



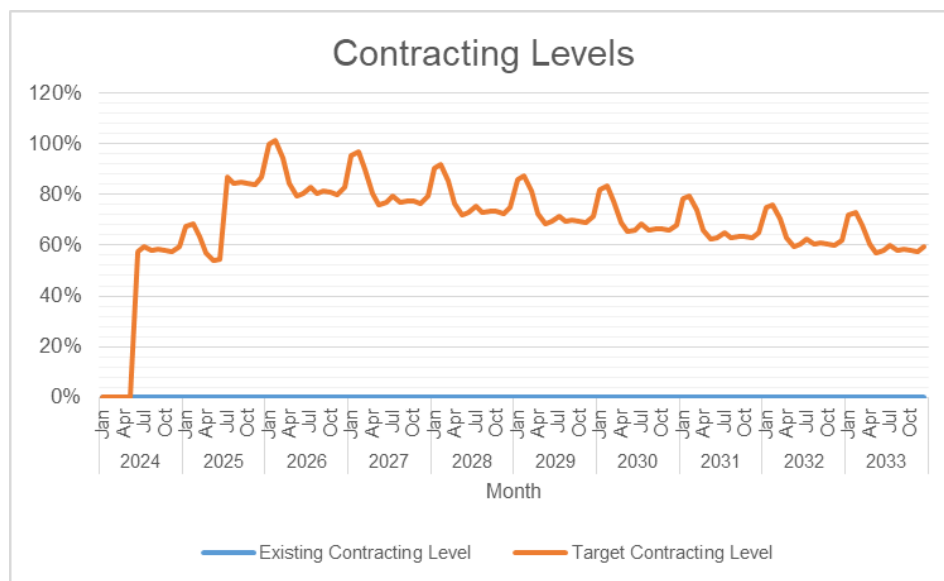
Of the available supply, the largest is 60 MW would be from EPSA. The deficiency will be purchased from the Wholesale Electricity Spot Market (WESM). Planned power supply shall be contracted through the on-going Competitive Selection Process (CSP) Aggregation spearheaded by NEA with a demand of 60 MW for base load. The remaining 13 MW for Intermediate and 20 MW for Peaking supplies will be allocated for renewable energy in compliance to RPS.

The negative WESM values were due to the variance between contracted and forecasted energy which means that, for several times, ALECO will have excess contracted energy. This will be corrected with the type of power supply contracts and bilateral contract quantity protocols that the coop will have in the future.

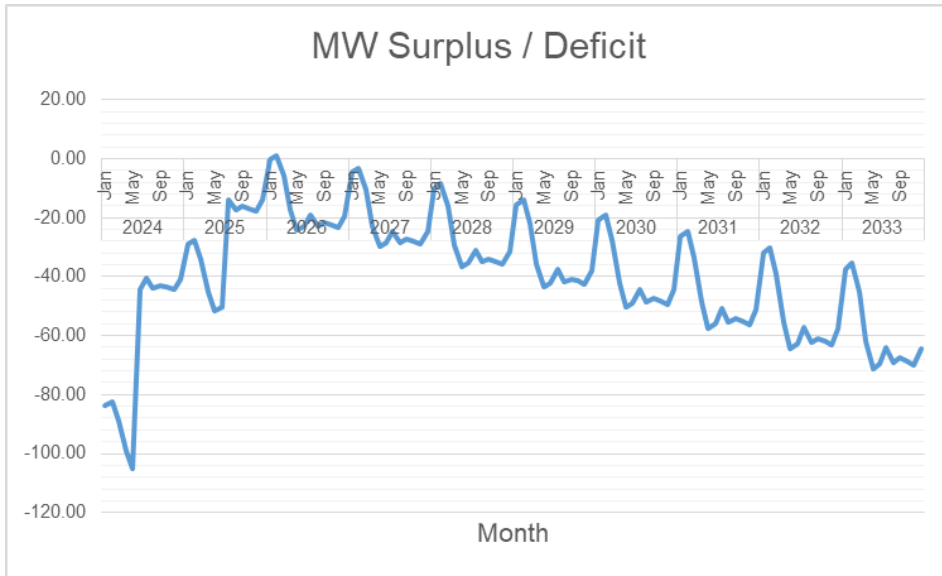
By 2026, ALECO foresees interests in investments in embedded generation by power companies in Ligao City and by year 2027 in Tabaco City.



The first wave of supply procurement for the 60 MW / 525,600 MWh for base load is by the month of November 2024 while 13 MW / 26,034 MWh for Intermediate and 20 MW / 96,124 MWh for Peaking will be available by the month of July 2025. This will be followed by the supply procurement for 1 MW / 584 MWh Embedded Generator in Ligao City by the year 2025 and 1 MW / 584 MWh Embedded Generator in Tabaco City by the year 2026.



Currently, ALECO sources its 100% power supply requirement from the Independent Electricity Market Operator of the Philippines Inc. (IEMOP). But the coop has ongoing application for 60 MW EPSA while simultaneously conducting CSP for its long term requirement.



In terms of demand Surplus/Deficit, ALECO, despite EPSA, the coop will have a deficit of as high as 44 MW in 2024. Meanwhile, the Deficit will reach to as high as 71.17 MW by the year 2033.

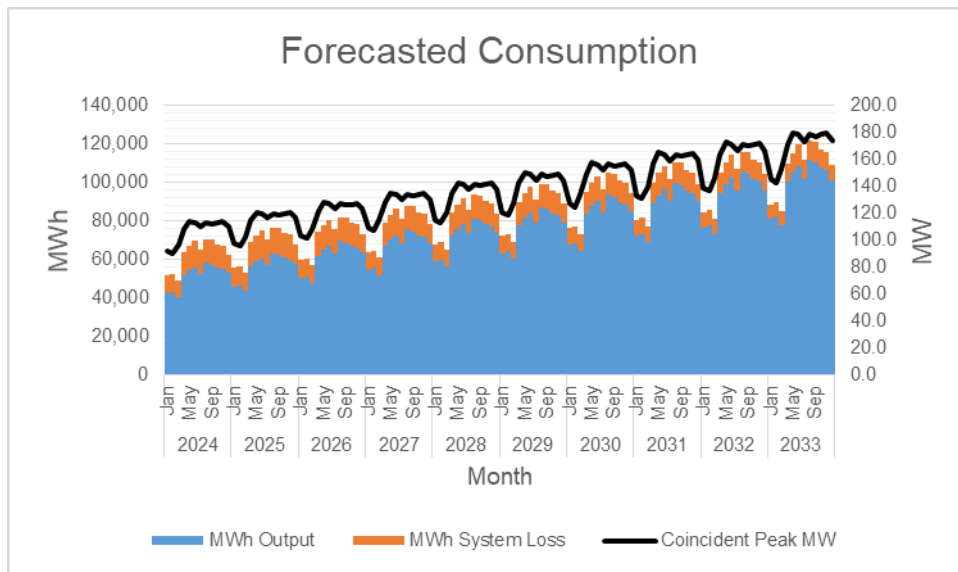
		MWh Offtake	MWh Output	MWh System Loss	Transm'n Loss	System Loss
2024	Jan	51,863	42,073	9,157	1.22%	17.87%
	Feb	52,586	42,695	9,257	1.21%	17.82%
	Mar	50,135	39,976	8,998	2.32%	18.37%
	Apr	64,515	51,745	11,971	1.24%	18.79%
	May	67,762	54,145	12,722	1.32%	19.03%
	Jun	70,169	55,790	13,557	1.17%	19.55%
	Jul	65,707	52,287	12,640	1.19%	19.47%
	Aug	71,358	58,274	12,092	1.39%	17.18%
	Sep	71,212	57,156	13,287	1.08%	18.86%
	Oct	68,840	55,878	12,043	1.34%	17.73%
	Nov	68,034	55,075	12,129	1.22%	18.05%
	Dec	64,079	53,165	9,085	2.85%	14.59%
2025	Jan	56,255	45,620	9,777	1.52%	17.65%
	Feb	57,038	46,294	9,884	1.51%	17.59%
	Mar	54,382	43,358	9,587	2.64%	18.11%
	Apr	70,041	56,112	12,752	1.68%	18.52%
	May	73,570	58,722	13,553	1.76%	18.75%
	Jun	76,181	60,505	14,444	1.62%	19.27%
	Jul	71,335	56,700	13,462	1.64%	19.19%
	Aug	77,461	63,191	12,889	1.78%	16.94%
	Sep	77,297	61,971	14,156	1.51%	18.60%
	Oct	74,735	60,597	12,841	1.73%	17.49%
	Nov	73,854	59,719	12,932	1.63%	17.80%
	Dec	69,564	57,650	9,917	2.87%	14.68%
2026	Jan	60,787	50,238	9,255	2.13%	15.56%
	Feb	61,631	50,974	9,356	2.11%	15.51%
	Mar	58,769	47,818	9,101	3.15%	15.99%
	Apr	75,601	61,880	12,097	2.15%	16.35%
	May	79,415	64,795	12,861	2.22%	16.56%
	Jun	82,233	66,806	13,701	2.10%	17.02%
	Jul	76,999	62,592	12,768	2.13%	16.94%
	Aug	83,605	69,532	12,238	2.19%	14.97%
	Sep	83,422	68,330	13,424	2.00%	16.42%
	Oct	80,667	66,731	12,188	2.17%	15.44%
	Nov	79,711	65,780	12,267	2.09%	15.72%
	Dec	75,083	63,312	9,774	2.66%	13.37%
2027	Jan	65,225	54,456	9,230	2.36%	14.49%
	Feb	66,130	55,252	9,331	2.34%	14.45%

		MWh Offtake	MWh Output	MWh System Loss	Transm'n Loss	System Loss
	Mar	63,060	51,874	9,082	3.34%	14.90%
	Apr	81,125	67,125	12,065	2.39%	15.24%
	May	85,224	70,307	12,827	2.45%	15.43%
	Jun	88,248	72,512	13,660	2.35%	15.85%
	Jul	82,626	67,929	12,731	2.38%	15.78%
	Aug	89,713	75,342	12,212	2.41%	13.95%
	Sep	89,512	74,113	13,384	2.25%	15.30%
	Oct	86,564	72,336	12,158	2.39%	14.39%
	Nov	85,533	71,312	12,233	2.32%	14.64%
	Dec	80,566	68,538	9,989	2.53%	12.72%
2028	Jan	69,639	58,732	9,142	2.53%	13.47%
	Feb	70,606	59,587	9,242	2.52%	13.43%
	Mar	67,329	55,988	9,000	3.48%	13.85%
	Apr	86,620	72,446	11,950	2.57%	14.16%
	May	91,001	75,901	12,706	2.63%	14.34%
	Jun	94,231	78,306	13,527	2.54%	14.73%
	Jul	88,224	73,349	12,608	2.57%	14.67%
	Aug	95,789	81,228	12,101	2.57%	12.97%
	Sep	95,571	79,981	13,253	2.45%	14.21%
	Oct	92,429	78,018	12,042	2.56%	13.37%
	Nov	91,324	76,921	12,114	2.51%	13.61%
	Dec	86,020	73,824	10,022	2.53%	11.95%
2029	Jan	74,012	63,114	8,924	2.67%	12.39%
	Feb	75,039	64,029	9,021	2.65%	12.35%
	Mar	71,557	60,210	8,791	3.57%	12.74%
	Apr	92,063	77,908	11,667	2.70%	13.03%
	May	96,724	81,645	12,406	2.76%	13.19%
	Jun	100,157	84,261	13,204	2.69%	13.55%
	Jul	93,769	78,919	12,309	2.71%	13.49%
	Aug	101,808	87,253	11,819	2.69%	11.93%
	Sep	101,574	86,005	12,934	2.59%	13.07%
	Oct	98,240	83,838	11,756	2.69%	12.30%
	Nov	97,061	82,671	11,822	2.65%	12.51%
	Dec	91,424	79,219	9,782	2.65%	10.99%
2030	Jan	78,335	67,536	8,632	2.77%	11.33%
	Feb	79,422	68,511	8,726	2.75%	11.30%
	Mar	75,737	64,473	8,510	3.64%	11.66%
	Apr	97,443	83,425	11,290	2.80%	11.92%
	May	102,379	87,449	12,006	2.86%	12.07%
	Jun	106,012	90,281	12,773	2.79%	12.39%
	Jul	99,249	84,550	11,909	2.81%	12.35%
	Aug	107,756	93,327	11,440	2.77%	10.92%
	Sep	107,507	92,090	12,511	2.70%	11.96%
	Oct	103,981	89,709	11,373	2.79%	11.25%
	Nov	102,732	88,473	11,434	2.75%	11.45%
	Dec	96,765	84,651	9,461	2.74%	10.05%
2031	Jan	82,599	71,989	8,268	2.84%	10.30%
	Feb	83,745	73,026	8,357	2.82%	10.27%
	Mar	79,860	68,770	8,155	3.68%	10.60%
	Apr	102,750	88,988	10,817	2.87%	10.84%
	May	107,957	93,303	11,503	2.92%	10.98%
	Jun	111,789	96,355	12,235	2.86%	11.27%
	Jul	104,655	90,231	11,410	2.88%	11.23%
	Aug	113,625	99,441	10,963	2.83%	9.93%
	Sep	113,361	98,227	11,983	2.78%	10.87%
	Oct	109,646	95,623	10,893	2.85%	10.23%
	Nov	108,326	94,318	10,950	2.82%	10.40%
	Dec	102,034	90,111	9,059	2.81%	9.13%
2032	Jan	86,802	76,470	7,830	2.88%	9.29%
	Feb	88,007	77,567	7,914	2.87%	9.26%
	Mar	83,924	73,095	7,728	3.70%	9.56%
	Apr	107,980	94,590	10,247	2.91%	9.77%
	May	113,453	99,198	10,898	2.96%	9.90%

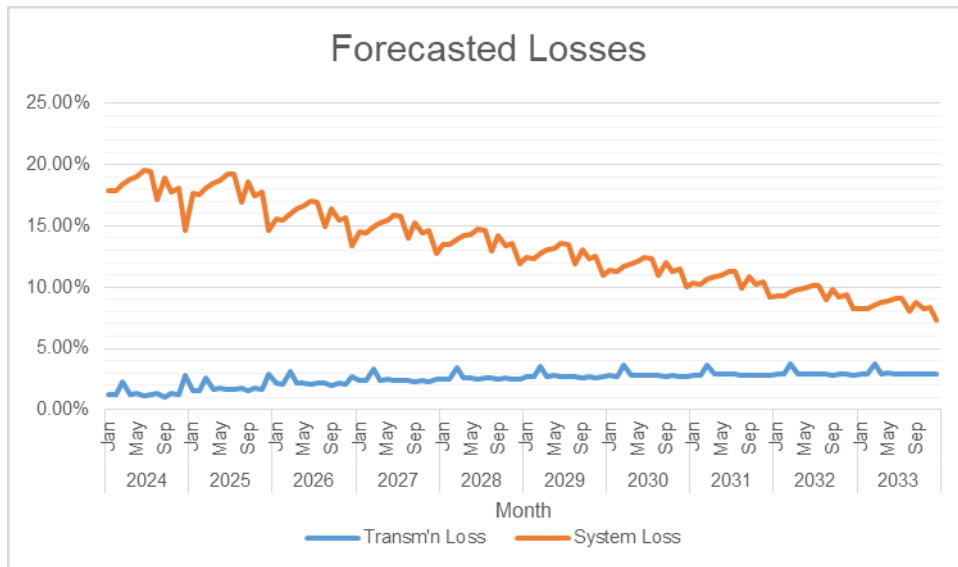
		MWh Offtake	MWh Output	MWh System Loss	Transm'n Loss	System Loss
	Jun	117,480	102,477	11,589	2.91%	10.16%
	Jul	109,982	95,956	10,809	2.93%	10.12%
	Aug	119,409	105,588	10,388	2.87%	8.96%
	Sep	119,131	104,407	11,349	2.83%	9.80%
	Oct	115,228	101,570	10,317	2.90%	9.22%
	Nov	113,840	100,200	10,368	2.87%	9.38%
	Dec	107,227	95,591	8,576	2.85%	8.23%
2033	Jan	90,941	80,974	7,319	2.91%	8.29%
	Feb	92,203	82,132	7,398	2.90%	8.26%
	Mar	87,926	77,446	7,228	3.70%	8.54%
	Apr	113,130	100,226	9,582	2.94%	8.73%
	May	118,865	105,131	10,191	2.98%	8.84%
	Jun	123,084	108,639	10,834	2.93%	9.07%
	Jul	115,228	101,720	10,107	2.95%	9.04%
	Aug	125,105	111,763	9,715	2.90%	8.00%
	Sep	124,813	110,626	10,609	2.87%	8.75%
	Oct	120,724	107,548	9,644	2.93%	8.23%
	Nov	119,270	106,114	9,690	2.91%	8.37%
	Dec	112,341	101,088	8,014	2.88%	7.35%

MWh Offtake was forecasted with the seven-year historical data and using the Regression Models, and then historical monthly indices.

System Loss figures are all initial estimates based from the projected MWh offtake and MWh sales.



MWh Output was expected to grow at an annual rate of 7.81% annually.



Transmission Loss is expected to range from 1.08% to 3.70% while System Loss is expected to range from 7.35% to 19.55% over time.

The ranges for the Transmission Losses and System Losses are still initial estimates.

For the System Loss, ALECO shall update the data detailing the segregated distribution system losses as soon as we have gathered all of the data.

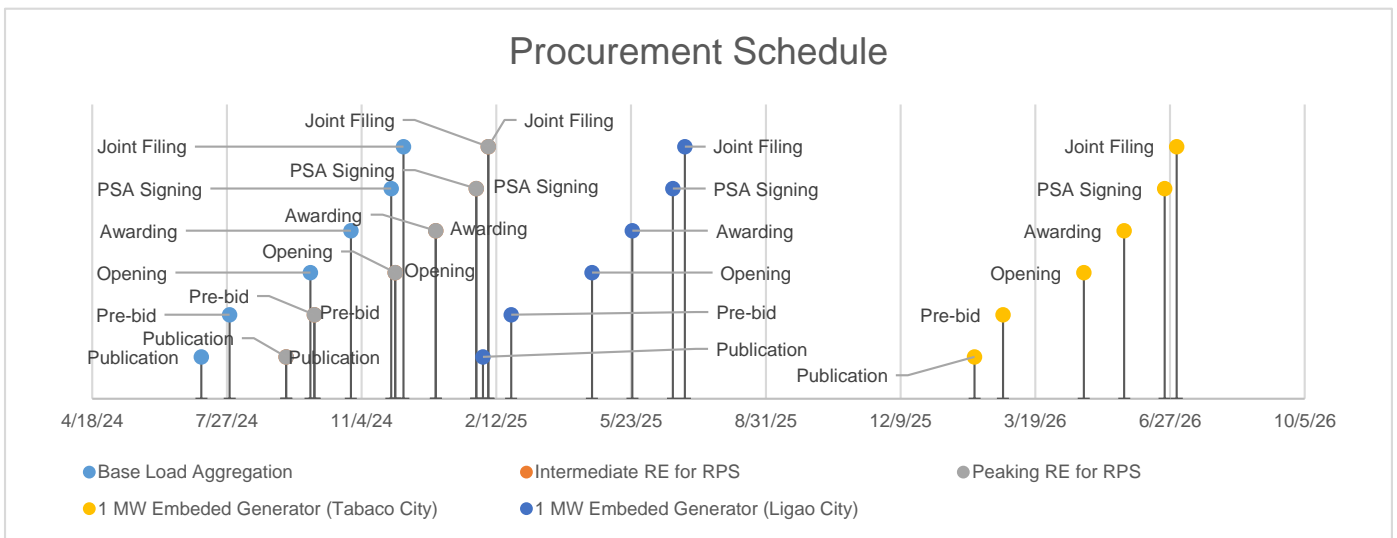
Power Supply

Case No.	Type	GenCo	Minimum MW	Minimum MWh/yr	PSA Start	PSA End
BASE EPSA	Base		60.00	264,960	5/26/2024	11/25/2024

At present, ALECO is sourcing its 100% power supply for on-grid consumers from the spot market until such time an EPSA is executed. Subsequently, if granted, it will source 60MW power requirement from EPSA for a period of six (6) months.

Meanwhile, with the issuance of new guidelines for CSP, ALECO shall reconstitute the special BAC and TWG for the procurement of the uncontracted power supply.

	Base Load Aggregation	Intermediate RE for RPS	Peaking RE for RPS	1 MW Embedded Generator (Tabaco City)	1 MW Embedded Generator (Ligao City)
Type	Base	Intermediate	Peaking	Intermediate	Intermediate
Minimum MW	60.00	10.00	18.00	0.50	0.50
Minimum MWh/yr	525,600	26,034	96,124	584	584
PSA Start	11/26/2024	6/26/2025	6/26/2025	12/26/2026	12/26/2025
PSA End	11/25/2039	6/25/2040	6/25/2040	12/25/2041	12/25/2040
Publication	7/8/2024	9/9/2024	9/9/2024	2/2/2026	2/2/2025
Pre-bid	7/29/2024	9/30/2024	9/30/2024	2/23/2026	2/23/2025
Opening	9/27/2024	11/29/2024	11/29/2024	4/24/2026	4/24/2025
Awarding	10/27/2024	12/29/2024	12/29/2024	5/24/2026	5/24/2025
PSA Signing	11/26/2024	1/28/2025	1/28/2025	6/23/2026	6/23/2025
Joint Filing	12/5/2024	2/6/2025	2/6/2025	7/2/2026	7/2/2025



In 2024, EPSA for the power supply of 60 MW shall commence until November 25, 2024 if approved.

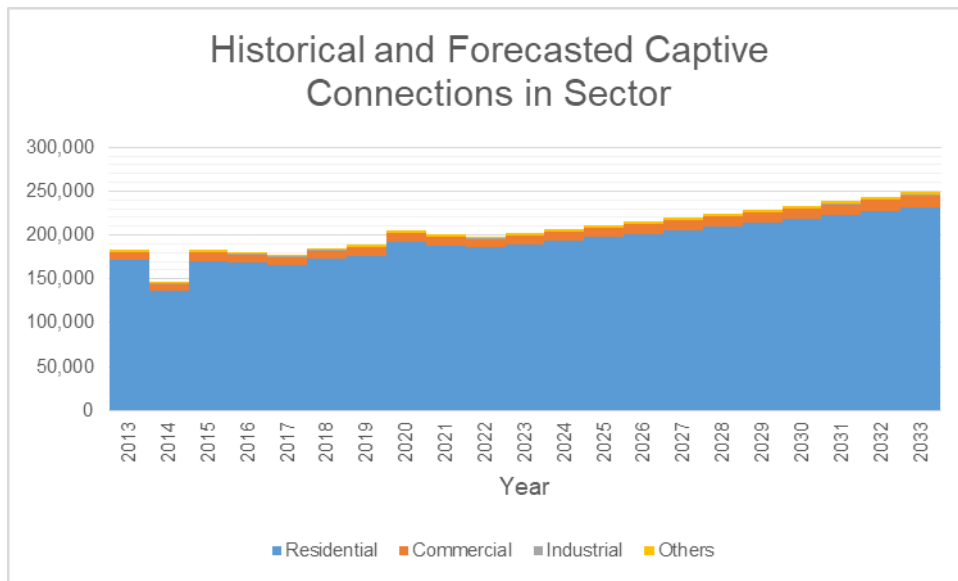
For the procurement of 60 MW with equivalent to 525,600 MWh/year for base load with the assistance of NEA which is planned to be available by November 26, 2024. The first publication or launch of CSP for the base load will be on July 8, 2024 or as recommended by the template but will follow NEA CSP-SBAC procurement schedule.

The remaining 13 MW with equivalent to 26,034 MWh/year for Intermediate and 20 MW with equivalent to 96,124 MWh/year for Peaking which is planned to be available on July 2025. Its first publication will be on September 09, 2024. Joint filing for the intermediate and peaking is planned on February 6, 2025.

This will be followed by the supply procurement for 1 MW with equivalent to 584 MWh/year Embedded Generator in Ligao City which is planned to be available on December 2025. The first publication or launch of CSP will be on February 2, 2025. Joint filing is planned on July 2, 2025.

This will be followed also by the supply procurement for 1 MW with equivalent to 584 MWh/year Embedded Generator in Tabaco City which is planned to be available on December 2026. The first publication or launch of CSP will be on February 2, 2026. Joint filing is planned on July 2, 2026.

Captive Customer Connections



The number of Residential connections is expected to grow at a rate of 2% annually. Said customer class is expected to account for 94% of the total consumption.